

PRELIMINARY DRAWING - NOT FOR CONSTRUCTION



RIVERBEND LOG HOMES

79 Carleton Drive, Nackawic, N.B., E6G 1W2,

Tel: 1-800-561-3000, Fax: 506-575-2855

www.riverbendloghomes.com

Client: Mountaineer

Building Style: Mountaineer

Drawn By: LC

Project No.: 2023 Revision: 0

Sheets

- A1 Elevations
- A2 3D View
- A3 3D View
- B2 Main Floor - Plan
- B3 Loft - Plan

Preliminary Design Plans

-Preliminary design plans are not suitable for construction.

*Notes:

-All design and construction is to conform - at minimum - to part 9 of the National Building Code of Canada, in addition to all relevant local codes.

-The owner accepts full responsibility to ensure that all persons involved in the installation are trained and have adequate knowledge of construction practices in accordance with current building codes and engineering specifications.

-Proper care must be taken in handling & storage of materials.

-Riverbend Log Homes will not be held accountable for material shortages, lost time, damaged or stolen property due to improper installation or irresponsibility of the owner, contractor, or other persons involved.

-Unless specified otherwise, decks are designed to support 60 lb/sq. ft. snow loads.

-Fireplace/chimney size and location are to be specified by owner and noted on approval drawings.

-Before applying stain, log surfaces must be sanded or washed with a mill-glaze removal solution. Contact Riverbend for a pamphlet on proper log home preserving and maintenance methods.

-Before starting construction, the builder/owner must review and be responsible for all details and dimensions and ensure that the plan conforms to all local building codes. Any errors or omissions are to be reported to the draftsman before construction.

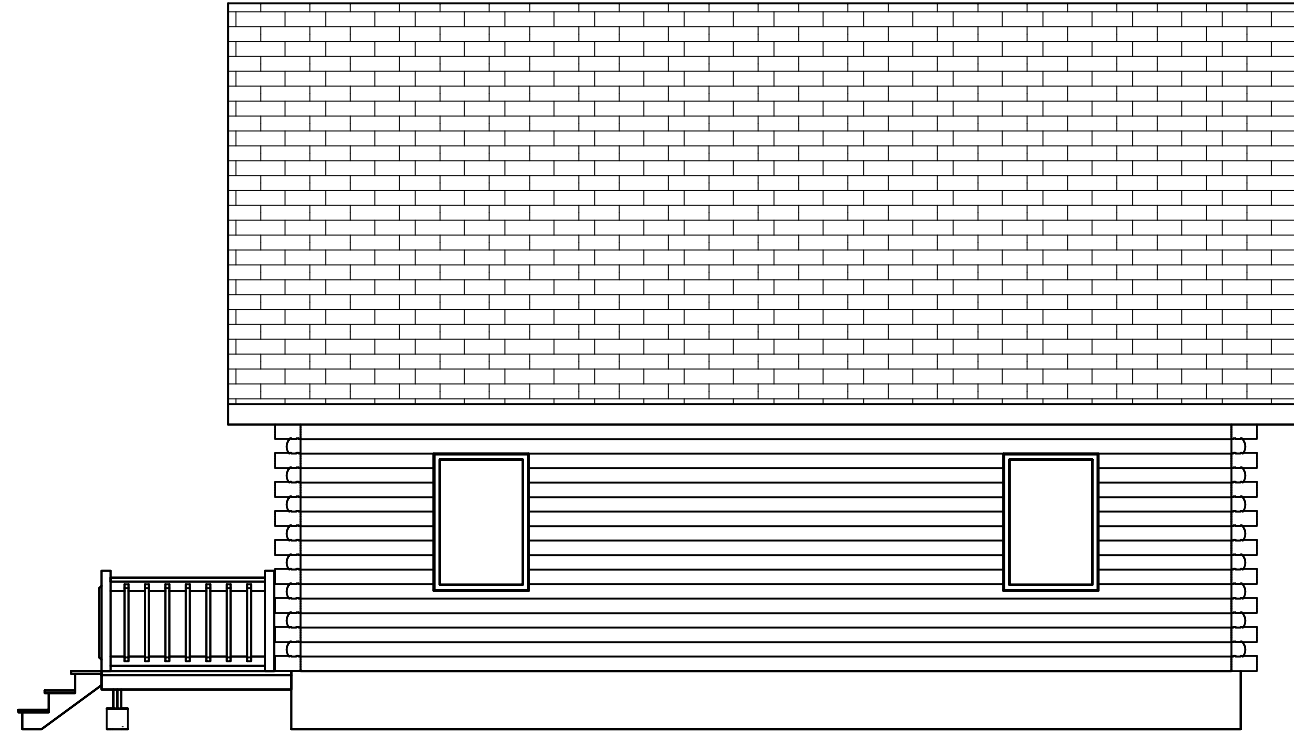
-Riverbend Log Homes is obliged to consult on the construction of the components provided in the log home kit. Consultation on any other aspect such as foundation, will be a matter of opinion and not considered a Professional Service.

-Dimensions govern over scale.

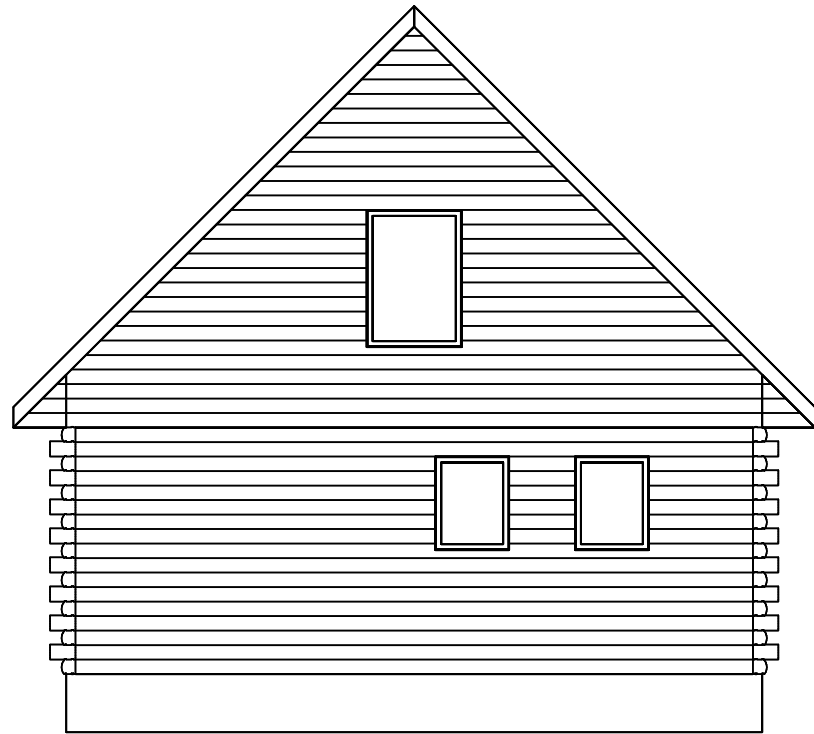
PRELIMINARY DRAWING - NOT FOR CONSTRUCTION



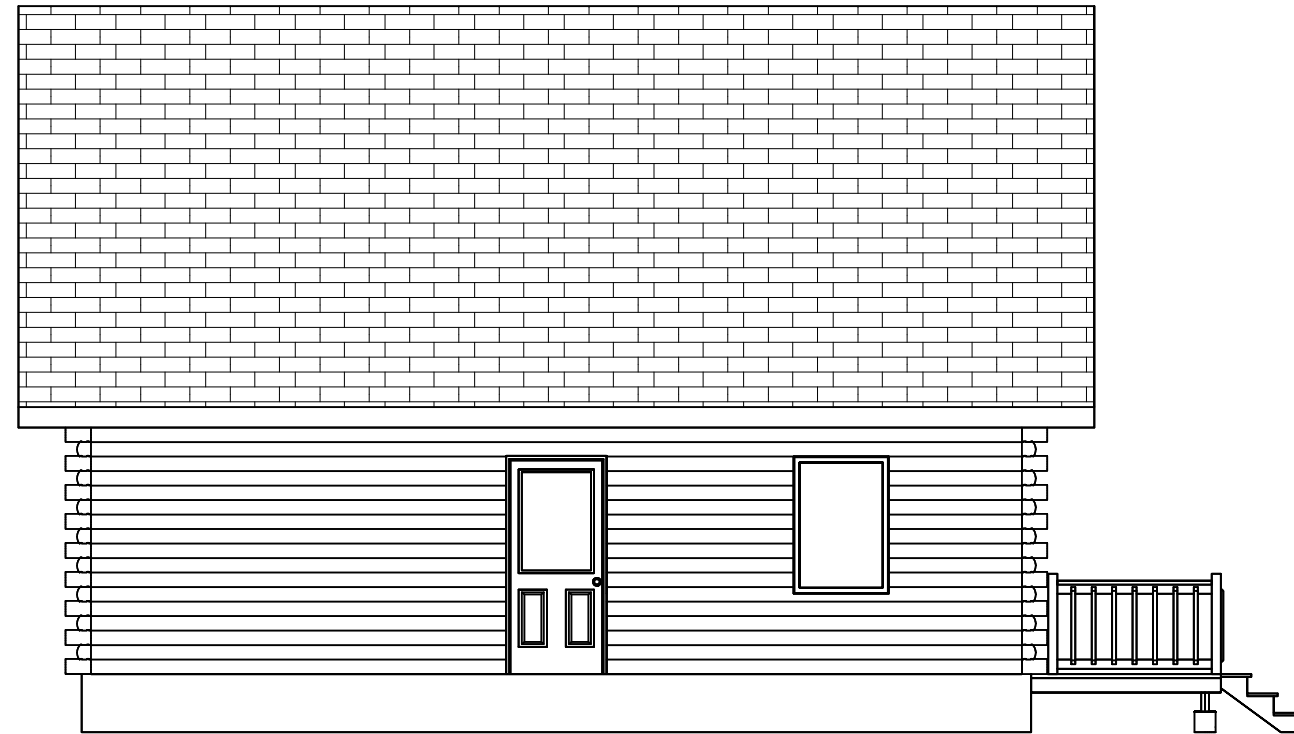
FRONT ELEVATION



RIGHT ELEVATION



BACK ELEVATION



LEFT ELEVATION

SHEET #:

A1

SHEET TITLE:

ELEVATIONS

PROJECT NAME:

MOUNTAINEER

BUILDING STYLE:

MOUNTAINEER

RIVERBEND LOG HOMES

P:1-800-561-3000

P:1-506-575-2255

F:1-506-575-2855

www.riverbendloghomes.com



PROJECT #: 2023

DATE: MARCH 08, 2023

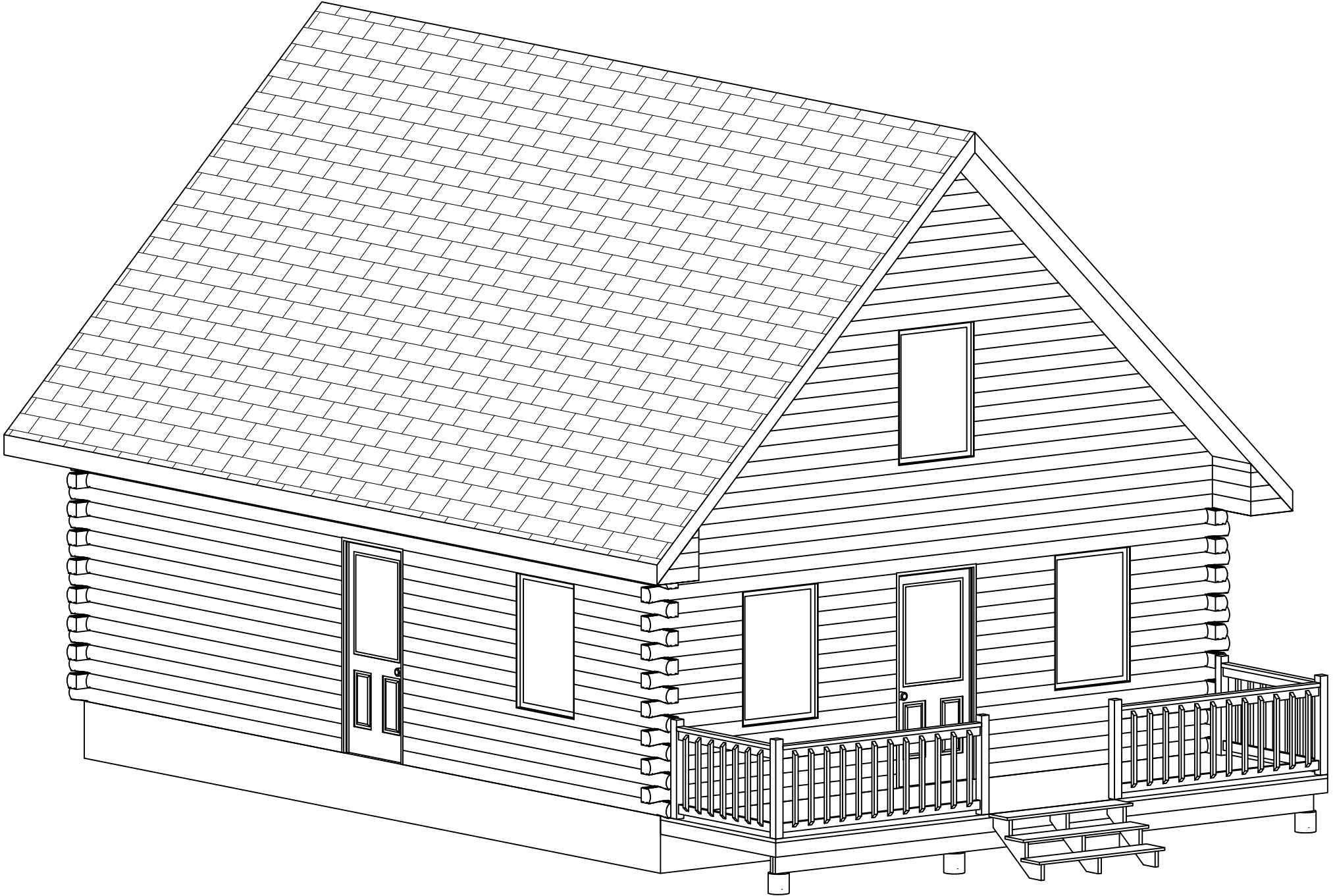
SHEET SUBSET: 3D MODEL

DRAWN BY: LC

CHECKED BY: -- REVISION: 0

SCALE: NOT TO SCALE

PRELIMINARY DRAWING - NOT FOR CONSTRUCTION



PROJECT #: 2023
DATE: MARCH 08, 2023
SHEET SUBSET: 3D MODEL
DRAWN BY: LC
CHECKED BY: --
SCALE: NOT TO SCALE

REVISION: 0

RIVERBEND LOG HOMES
P: 1-800-561-3000
P: 1-506-575-2255
F: 1-506-575-2855
www.riverbendloghomes.com

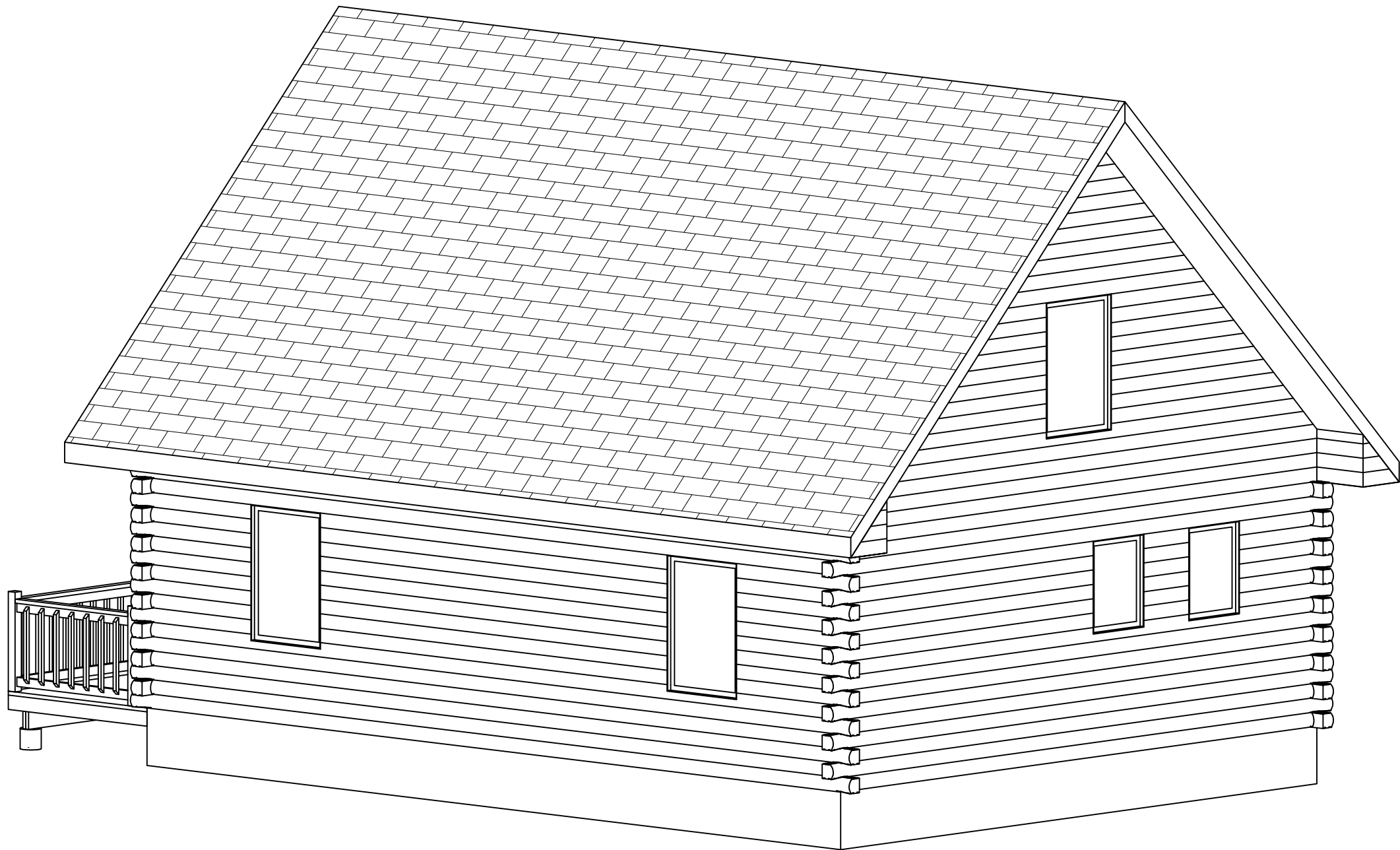


PROJECT NAME: MOUNTAINEER
BUILDING STYLE: MOUNTAINEER

SHEET TITLE: 3D VIEW

SHEET #: A2

PRELIMINARY DRAWING - NOT FOR CONSTRUCTION



PROJECT #: 2023
DATE: MARCH 08, 2023
SHEET SUBSET: 3D MODEL
DRAWN BY: LC
CHECKED BY: -- REVISION: 0
SCALE: NOT TO SCALE

RIVERBEND LOG HOMES
P: 1-800-561-3000
P: 1-506-575-2255
F: 1-506-575-2855
www.riverbendloghomes.com

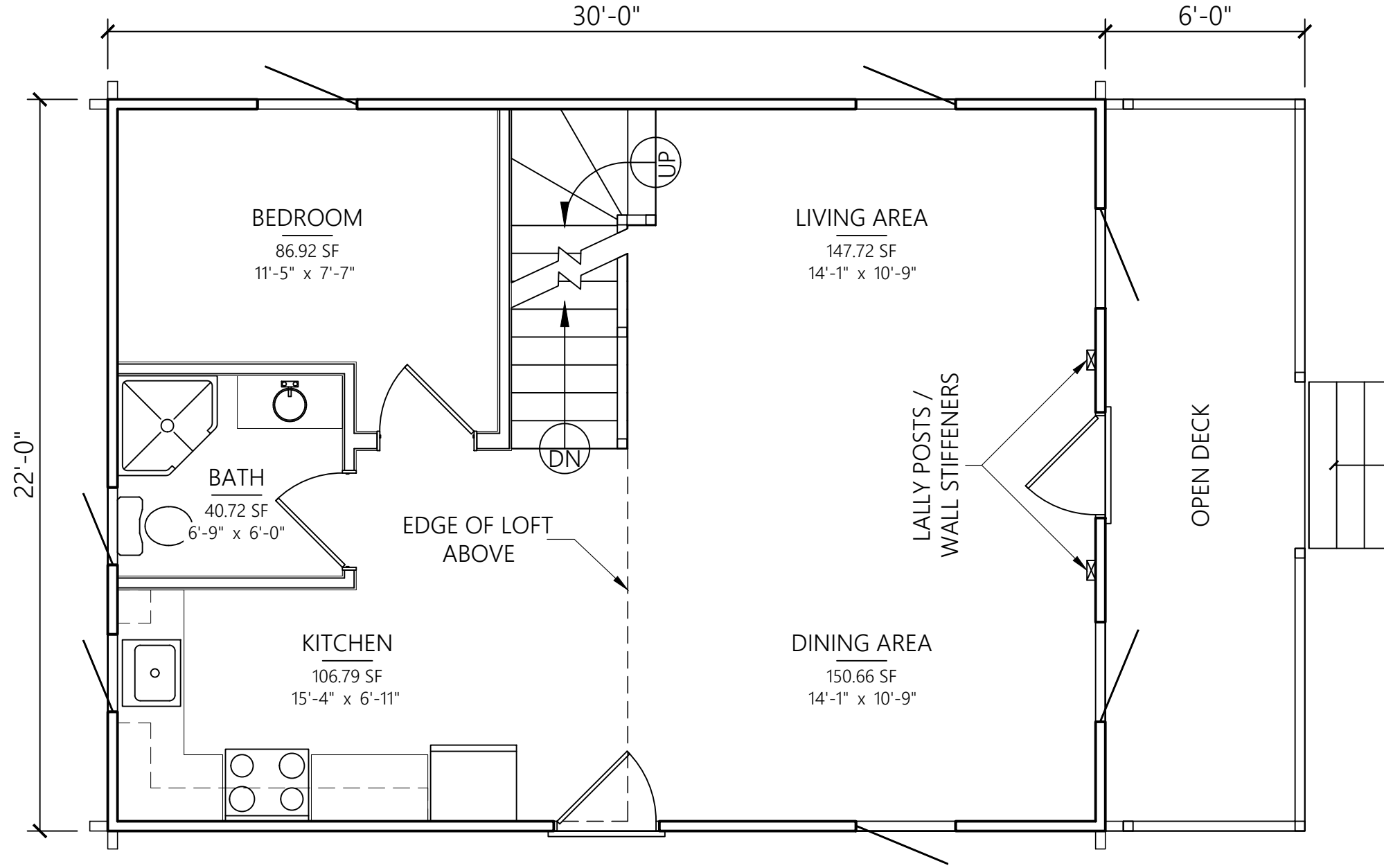


PROJECT NAME: MOUNTAINEER
BUILDING STYLE: MOUNTAINEER

SHEET TITLE: 3D VIEW

SHEET #: A3

PRELIMINARY DRAWING - NOT FOR CONSTRUCTION



PROJECT #: 2023
 DATE: MARCH 08, 2023
 SHEET SUBSET: PLANS
 DRAWN BY: LC
 CHECKED BY: --
 SCALE: 1/4" = 1'-0"

RIVERBEND LOG HOMES
 P: 1-800-561-3000
 P: 1-506-575-2255
 F: 1-506-575-2855
 www.riverbendloghomes.com

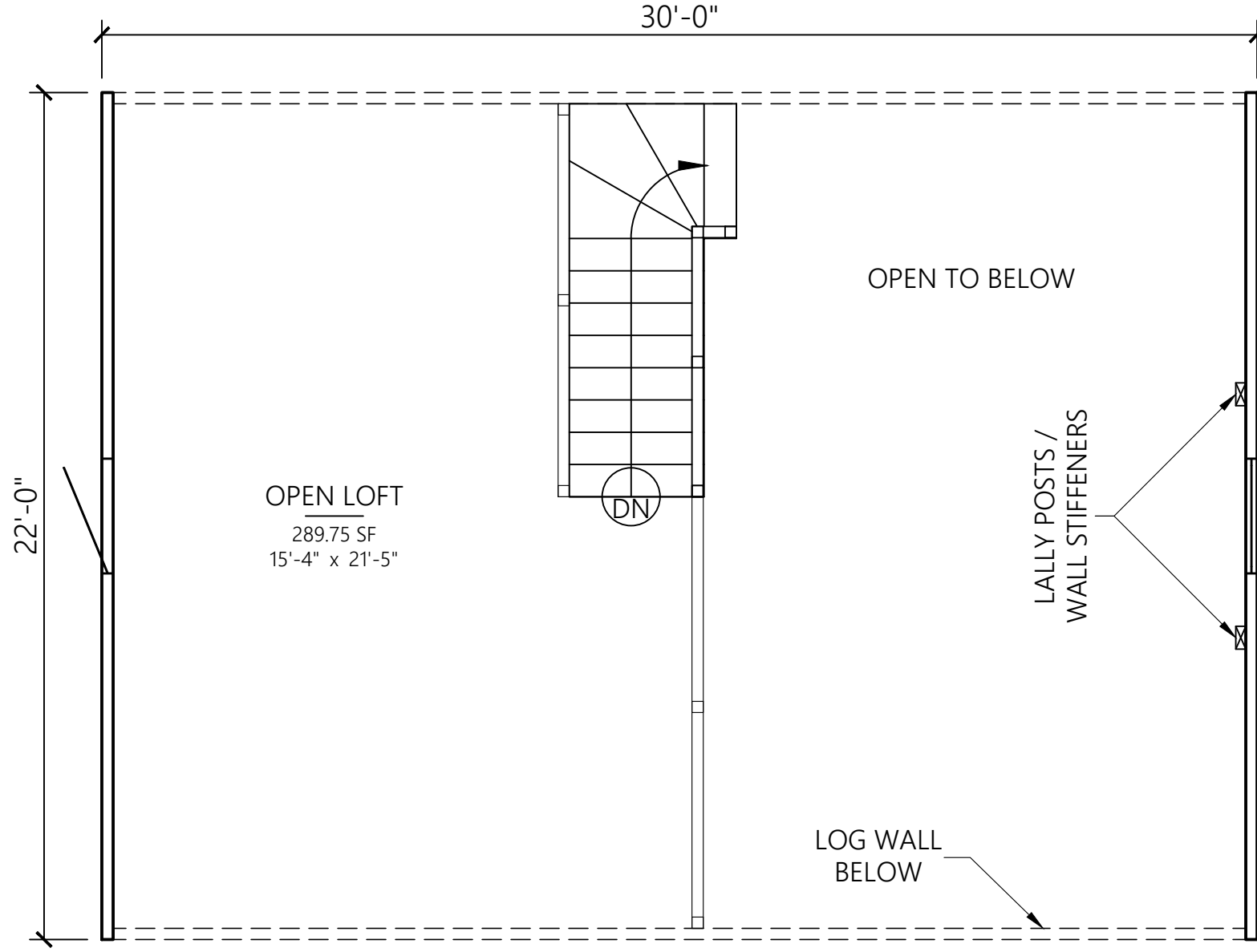


PROJECT NAME: MOUNTAINEER
 BUILDING STYLE: MOUNTAINEER

SHEET TITLE: MAIN FLOOR - PLAN

SHEET #: B2

PRELIMINARY DRAWING - NOT FOR CONSTRUCTION



PROJECT #: 2023
DATE: MARCH 08, 2023
SHEET SUBSET: PLANS
DRAWN BY: LC
CHECKED BY: --
SCALE: 1/4" = 1'-0"

REVISION: 0



RIVERBEND LOG HOMES
P: 1-800-561-3000
P: 1-506-575-2255
F: 1-506-575-2855
www.riverbendloghomes.com

PROJECT NAME: MOUNTAINEER
BUILDING STYLE: MOUNTAINEER

SHEET TITLE: LOFT - PLAN

SHEET #: B3