

PRELIMINARY DRAWING - NOT FOR CONSTRUCTION



# RIVERBEND LOG HOMES

79 Carleton Drive, Nackawic, N.B., E6G 1W2,

Tel: 1-800-561-3000, Fax: 506-575-2855

[www.riverbendloghomes.com](http://www.riverbendloghomes.com)

Client: Summit

Building Style: Summit

Drawn By: LC

Project No.: 2022 Revision: 0

## Sheets

- A1 Elevations
- A2 3D View
- A3 3D View
- B2 Main Floor - Plan
- B3 Loft - Plan

## Preliminary Design Plans

-Preliminary design plans are not suitable for construction.

### \*Notes:

-All design and construction is to conform - at minimum - to part 9 of the National Building Code of Canada, in addition to all relevant local codes.

-The owner accepts full responsibility to ensure that all persons involved in the installation are trained and have adequate knowledge of construction practices in accordance with current building codes and engineering specifications.

-Proper care must be taken in handling & storage of materials.

-Riverbend Log Homes will not be held accountable for material shortages, lost time, damaged or stolen property due to improper installation or irresponsibility of the owner, contractor, or other persons involved.

-Unless specified otherwise, decks are designed to support 60 lb/sq. ft. snow loads.

-Fireplace/chimney size and location are to be specified by owner and noted on approval drawings.

-Before applying stain, log surfaces must be sanded or washed with a mill-glaze removal solution. Contact Riverbend for a pamphlet on proper log home preserving and maintenance methods.

-Before starting construction, the builder/owner must review and be responsible for all details and dimensions and ensure that the plan conforms to all local building codes. Any errors or omissions are to be reported to the draftsman before construction.

-Riverbend Log Homes is obliged to consult on the construction of the components provided in the log home kit. Consultation on any other aspect such as foundation, will be a matter of opinion and not considered a Professional Service.

-Dimensions govern over scale.

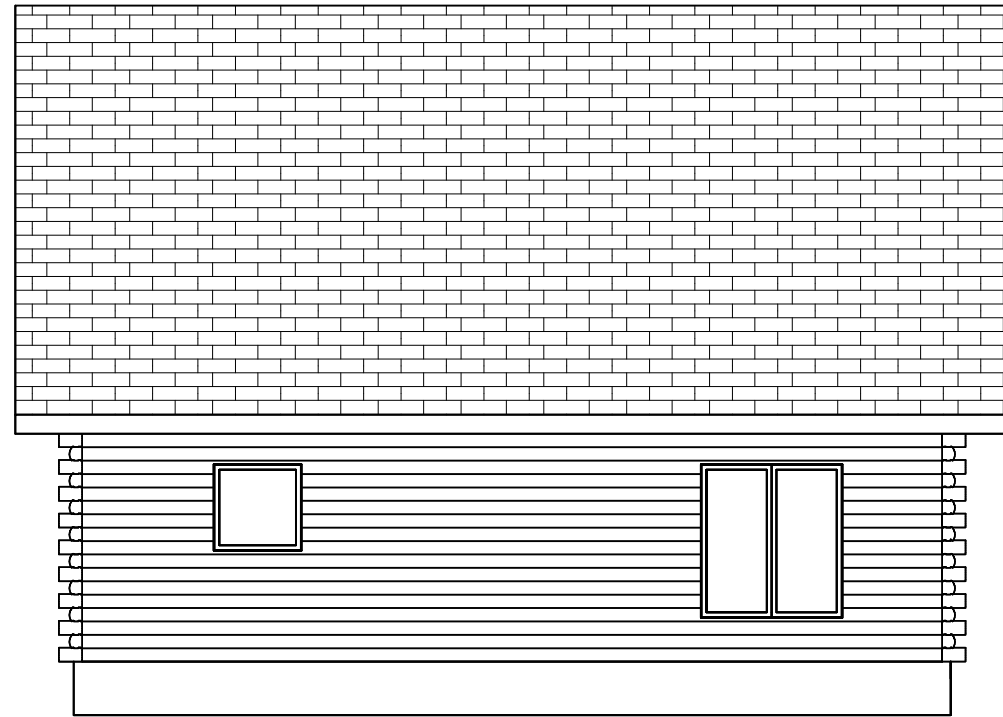
PRELIMINARY DRAWING - NOT FOR CONSTRUCTION



FRONT ELEVATION



RIGHT ELEVATION



BACK ELEVATION



LEFT ELEVATION

SHEET #:

A1

SHEET TITLE:

ELEVATIONS

PROJECT NAME:

SUMMIT

BUILDING STYLE:

SUMMIT

RIVERBEND LOG HOMES

P:1-800-561-3000

P:1-506-575-2255

F:1-506-575-2855

www.riverbendloghomes.com



PROJECT #: 2022

DATE: FEBRUARY 23, 2023

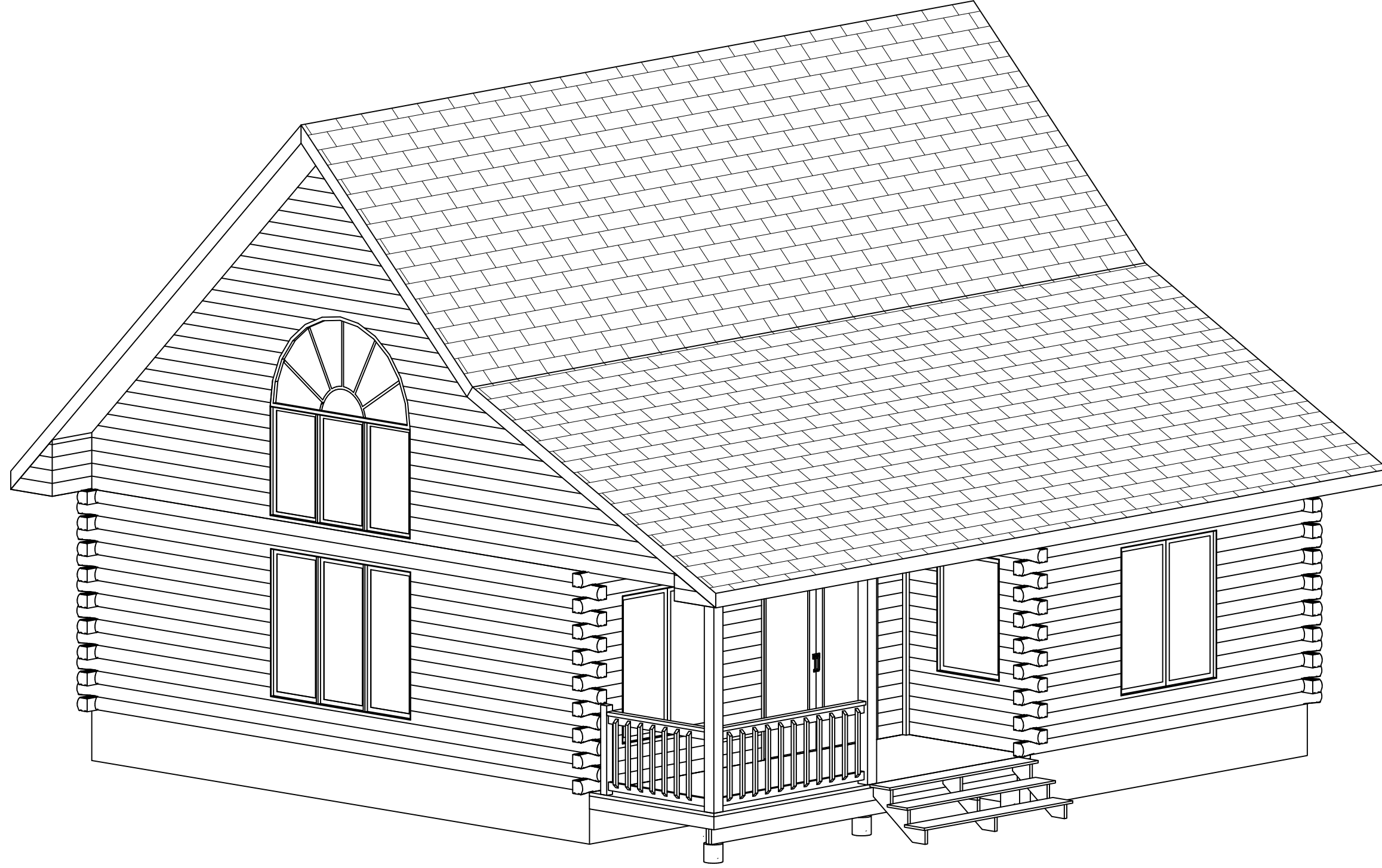
SHEET SUBSET: 3D MODEL

DRAWN BY: LC

CHECKED BY: -- REVISION: 0

SCALE: NOT TO SCALE

PRELIMINARY DRAWING - NOT FOR CONSTRUCTION



PROJECT #: 2022  
DATE: FEBRUARY 23, 2023  
SHEET SUBSET: 3D MODEL  
DRAWN BY: LC  
CHECKED BY: -- REVISION: 0  
SCALE: NOT TO SCALE

RIVERBEND LOG HOMES  
P: 1-800-561-3000  
P: 1-506-575-2255  
F: 1-506-575-2855  
[www.riverbendloghomes.com](http://www.riverbendloghomes.com)

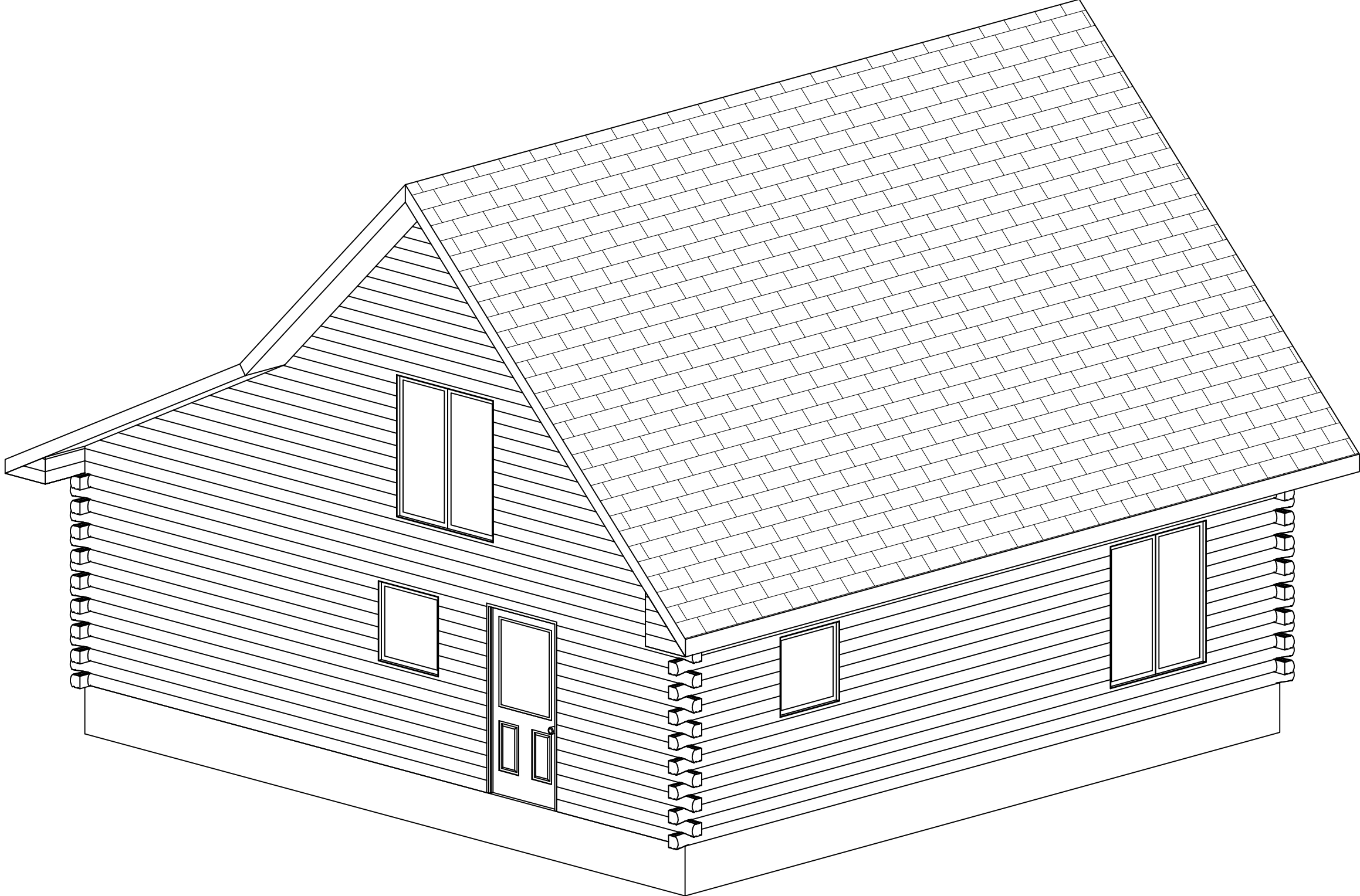


PROJECT NAME: SUMMIT  
BUILDING STYLE: SUMMIT

SHEET TITLE: 3D VIEW

SHEET #: A2

PRELIMINARY DRAWING - NOT FOR CONSTRUCTION



PROJECT #: 2022  
DATE: FEBRUARY 23, 2023  
SHEET SUBSET: 3D MODEL  
DRAWN BY: LC  
CHECKED BY: --  
SCALE: NOT TO SCALE

REVISION: 0

RIVERBEND LOG HOMES  
P: 1-800-561-3000  
P: 1-506-575-2255  
F: 1-506-575-2855  
www.riverbendloghomes.com

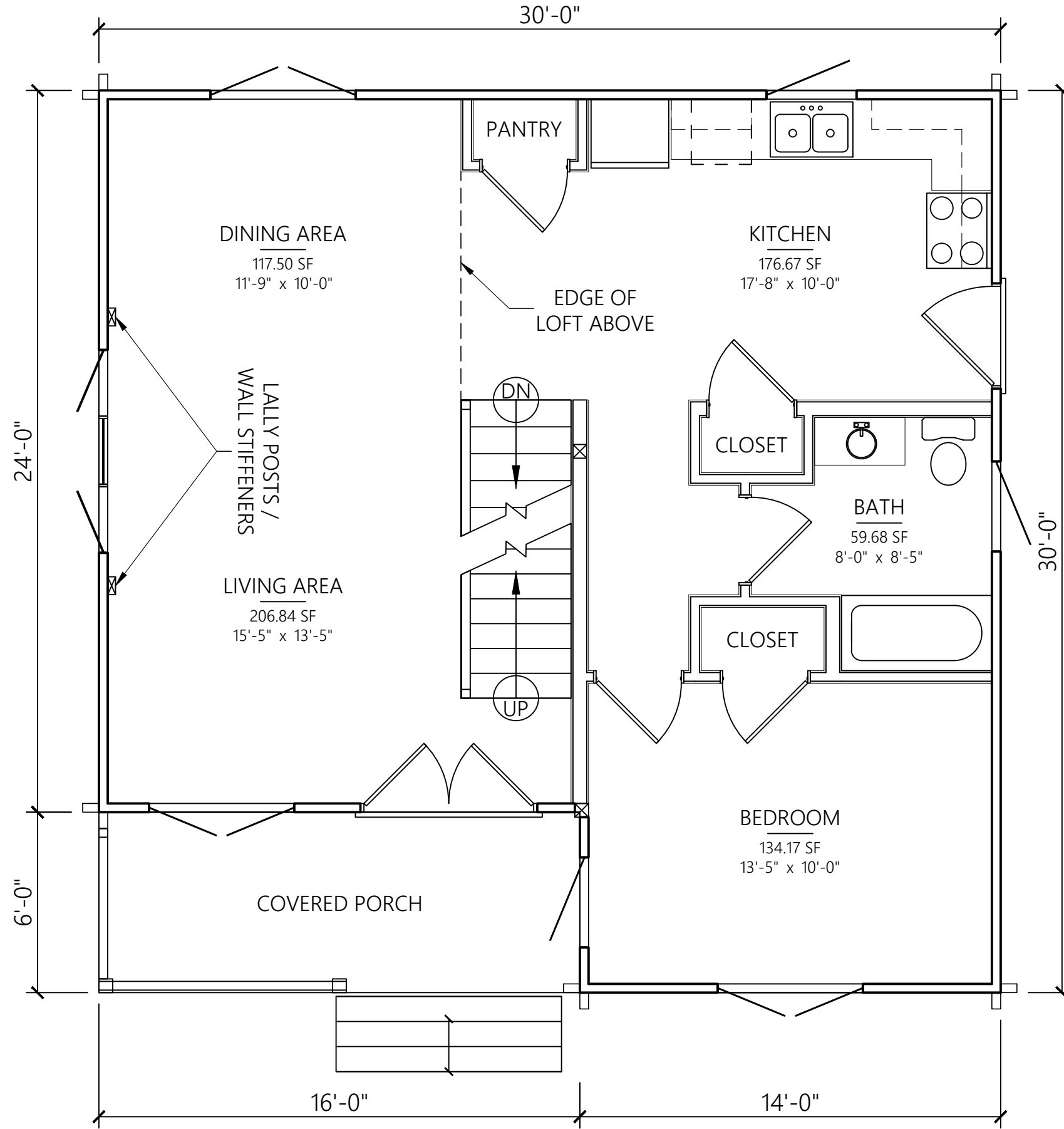


PROJECT NAME: SUMMIT  
BUILDING STYLE: SUMMIT

SHEET TITLE: 3D VIEW

SHEET #: A3

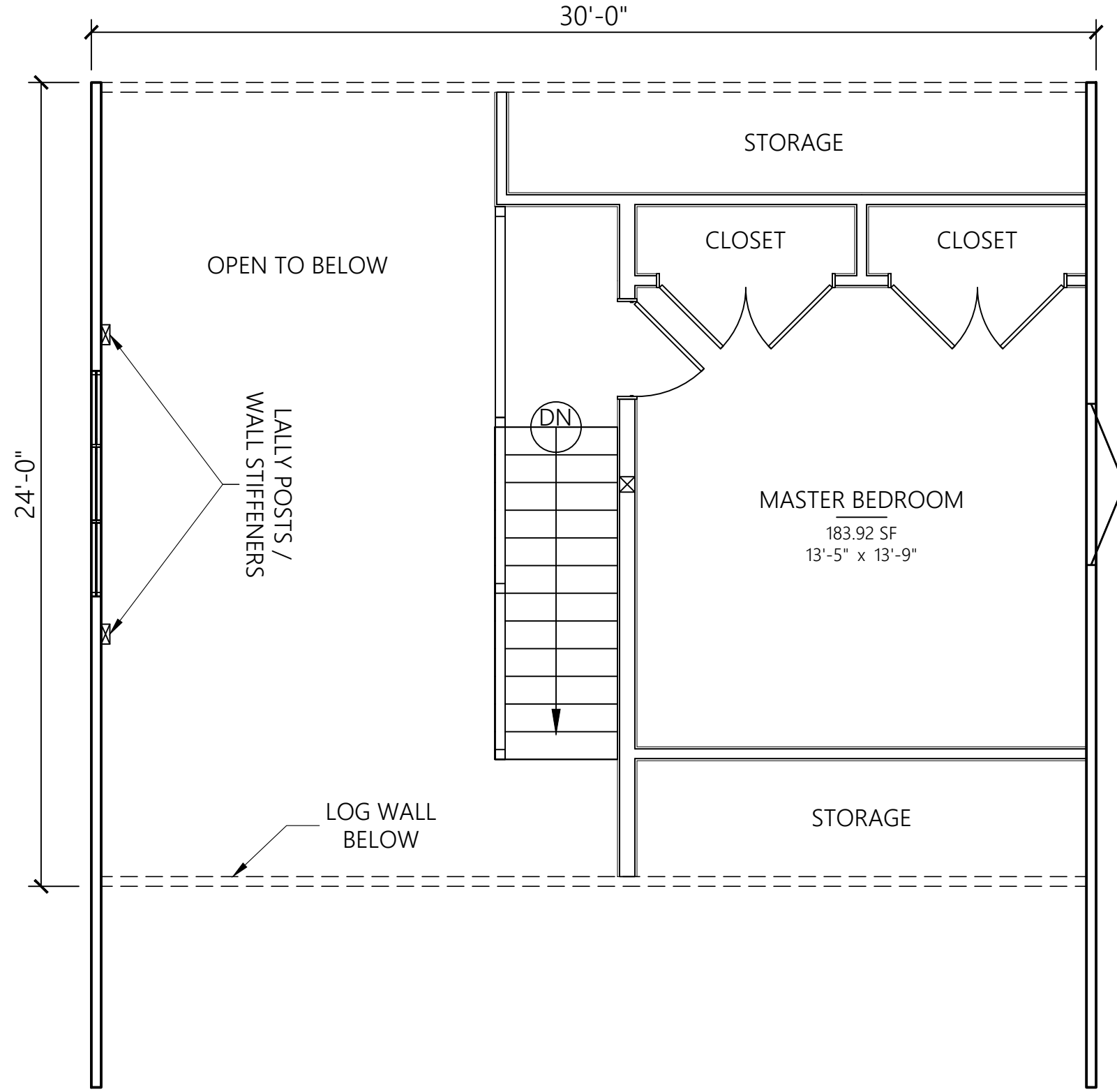
PRELIMINARY DRAWING - NOT FOR CONSTRUCTION



PROJECT #: 2022	RIVERBEND LOG HOMES	PROJECT NAME:	SUMMIT	SHEET #:	B2
DATE: FEBRUARY 23, 2023	P:1-800-561-3000	BUILDING STYLE:	SUMMIT	SHEET TITLE:	MAIN FLOOR - PLAN
SHEET SUBSET: PLANS	P:1-506-575-2255		SUMMIT		
DRAWN BY: LC	F:1-506-575-2855	SCALE: 1/4" = 1'-0"			
CHECKED BY: --	www.riverbendloghomes.com				
REVISION: 0					



PRELIMINARY DRAWING - NOT FOR CONSTRUCTION



PROJECT #: 2022  
DATE: FEBRUARY 23, 2023  
SHEET SUBSET: PLANS  
DRAWN BY: LC  
CHECKED BY: --  
SCALE: 1/4" = 1'-0"

REVISION: 0

RIVERBEND LOG HOMES  
P: 1-800-561-3000  
P: 1-506-575-2255  
F: 1-506-575-2855  
www.riverbendloghomes.com



PROJECT NAME: SUMMIT  
BUILDING STYLE: SUMMIT

SHEET TITLE: LOFT - PLAN

SHEET #: B3