

RIVERBEND LOG HOMES

79 Carleton Drive, Nackawic, N.B., E6G 1W2,

Tel: 1-800-561-3000, Fax: 506-575-2855

www.riverbendloghomes.com

Sheet List

--	Cover Page
A1	Elevations
A2	3D View
A3	3D View
B2	First Floor Plan
B3	Loft Floor Plan

Preliminary Design Plans

—Study sets plans are free up to 2 revisions. If more revisions are required, a basic fee of \$0.25 per square foot will be charged. This fee is refundable at time of purchase.

*Notes:

*The following notes apply but are not limited to all pages of this document.

—The owner accepts full responsibility to ensure that all persons involved in the installation are trained and have adequate knowledge of construction practices in accordance with current Building Codes and Engineering Specifications.

—Proper care must be taken in Handling & Storage of materials.

—Riverbend Log Homes will not be held accountable for material shortages, lost time, damaged or stolen property due to improper installation or irresponsibility of the owner, contractor, or other persons involved.

—All foundation and subfloor materials are the responsibility of the owner. Structural Members including Foundation, Footings, Columns and Beams are to conform to local codes and approved by a Professional Engineer.

—Fireplace/Chimney size and location are to be specified by owner and noted on approval drawings.

—Before applying stain, log surfaces must be sanded or washed with a mill-glaze removal solution. Contact Riverbend for a pamphlet on proper Log Home Preserving and Maintenance methods.

—Before starting construction, the builder/owner must review and be responsible for all details and dimensions, and ensure the plan conforms to all local building codes. Any errors or omissions to be reported to drafterperson before construction.

—Riverbend Log Homes is obliged to consult on the construction of the components provided in the log home kit. Consultation on any other aspect such as foundation, will be a matter of opinion and not considered a Professional Service.

—Dimensions govern over scale.

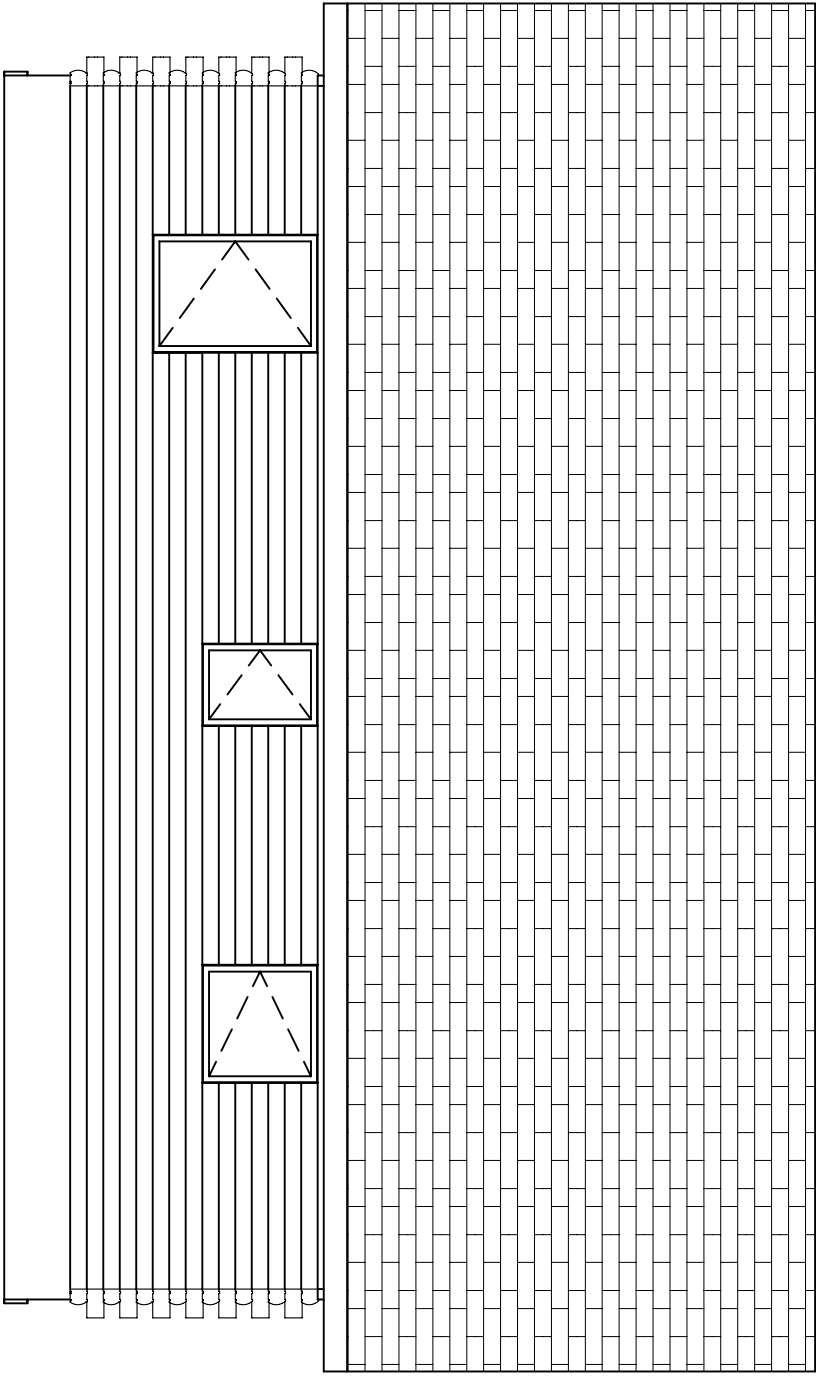
Client: 22'x34' Lakeside (eng. Truss)

Building Style: 22'x34' Lakeside With Eng. Roof Truss

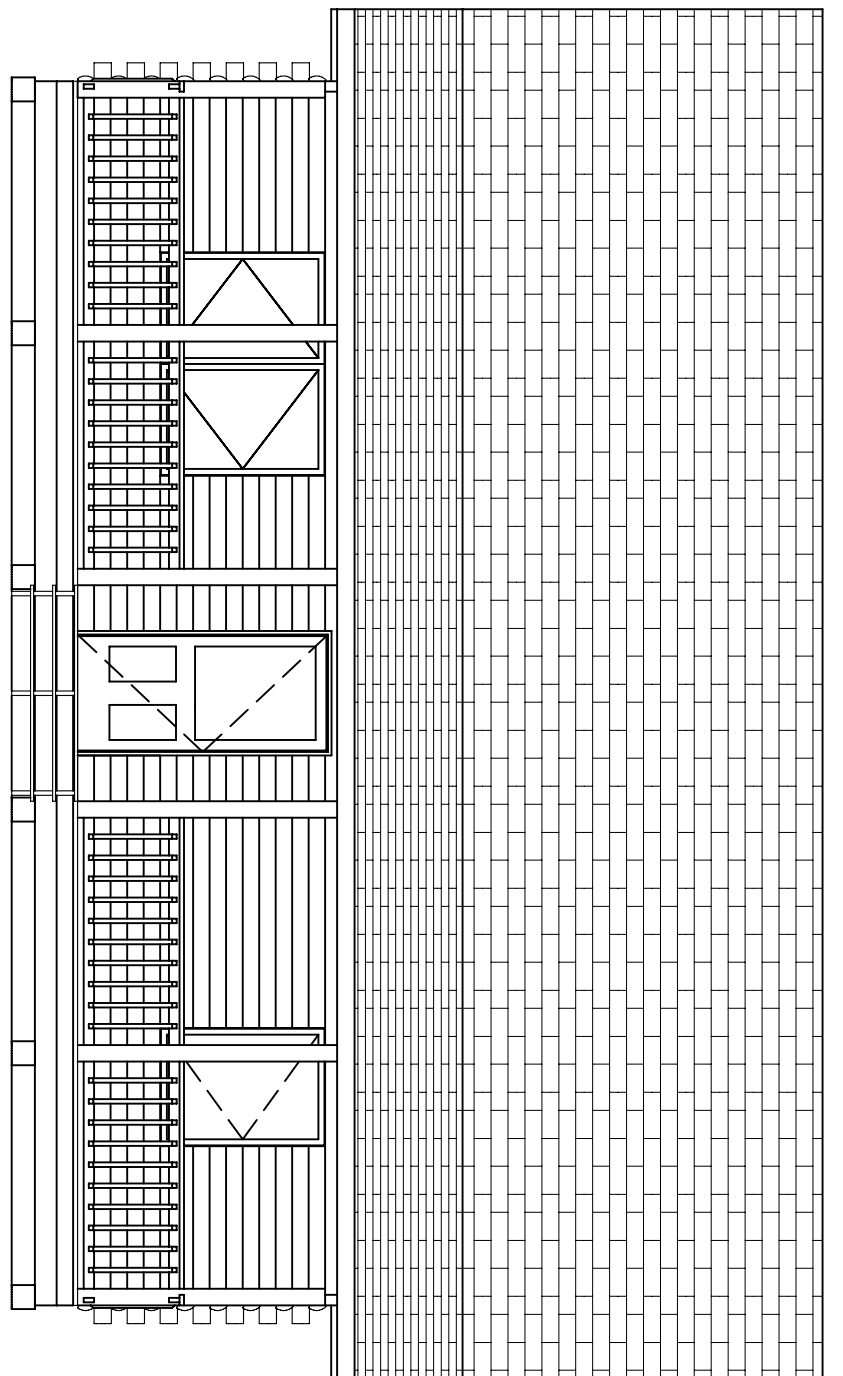
Drawn By: -----

Project No.: # Revision No.: 0

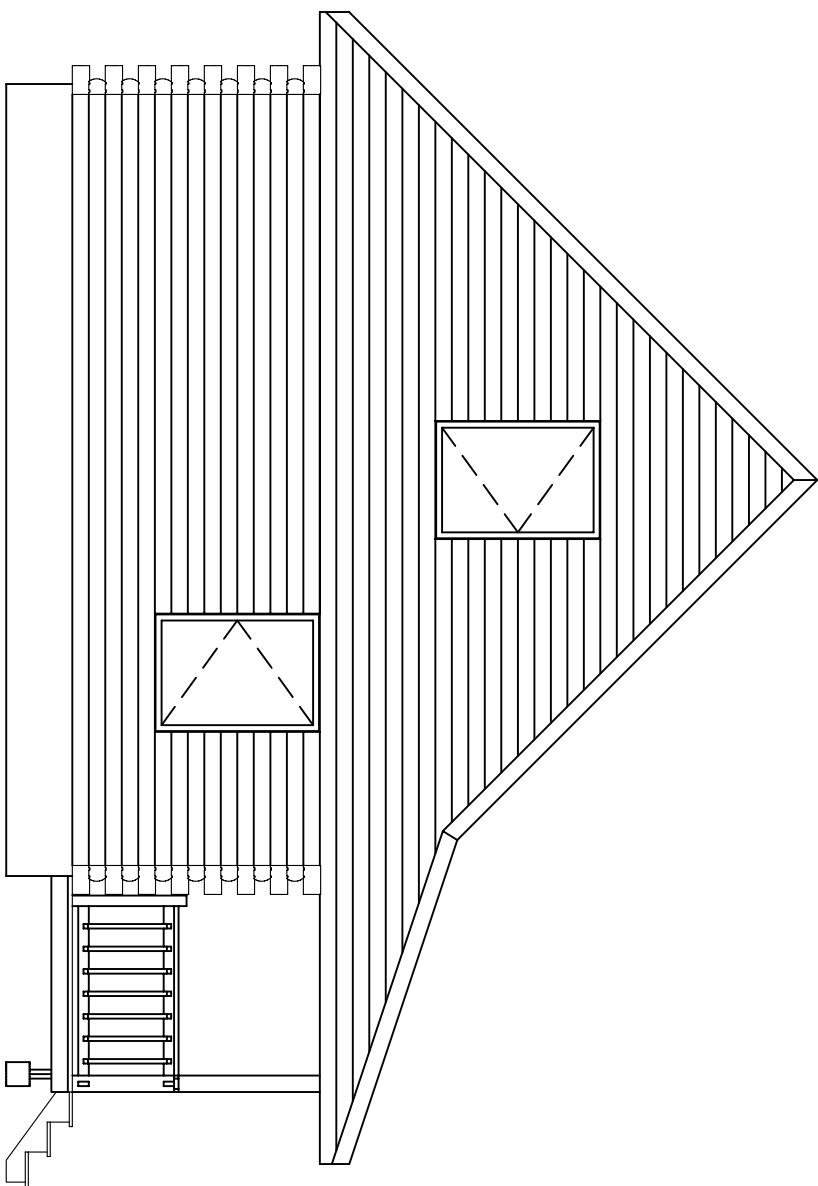
Back Elevation



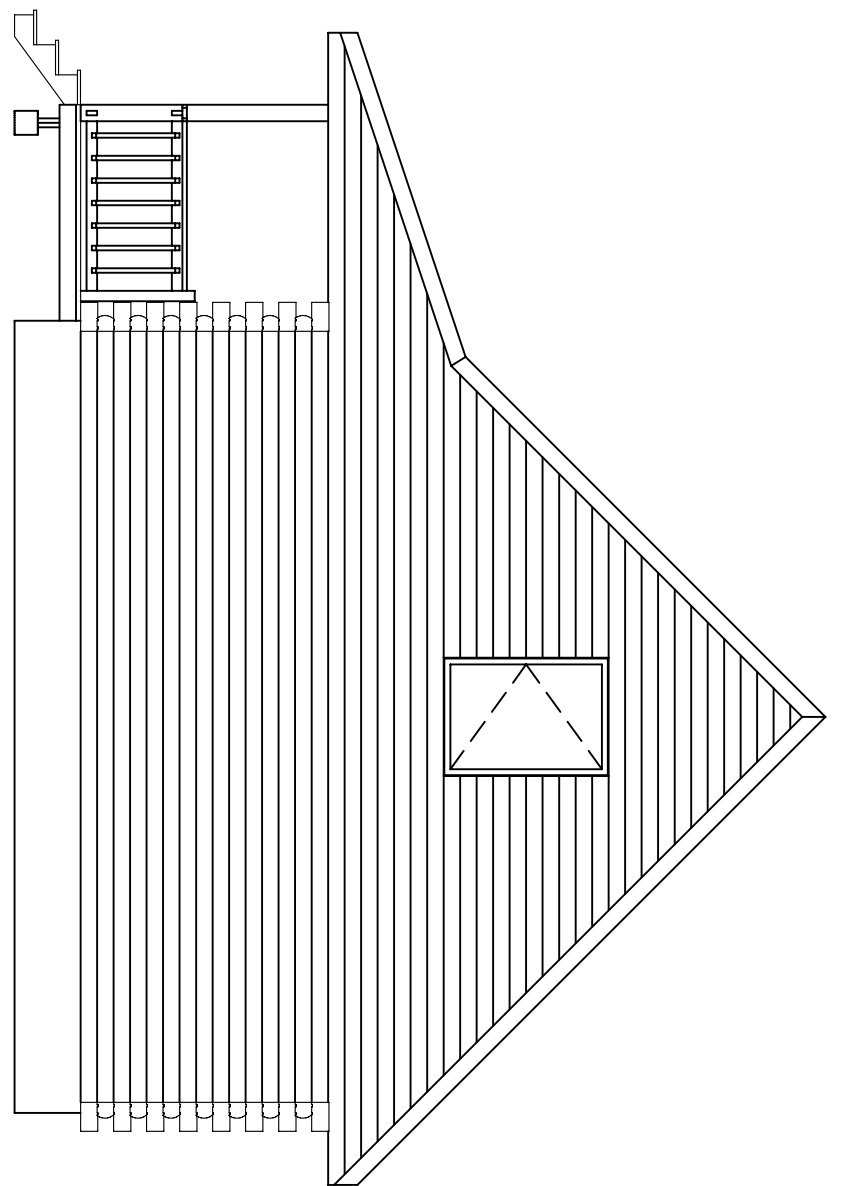
Front Elevation



Left Elevation



Right Elevation



PROJECT NO: #
 DATE: ----
 SHT SUBSET: 3D Reps & Elevs
 DRAWN BY: ----
 CHK'D BY: REV. NO: 0
 SCALE: 3/16" = 1'-0"

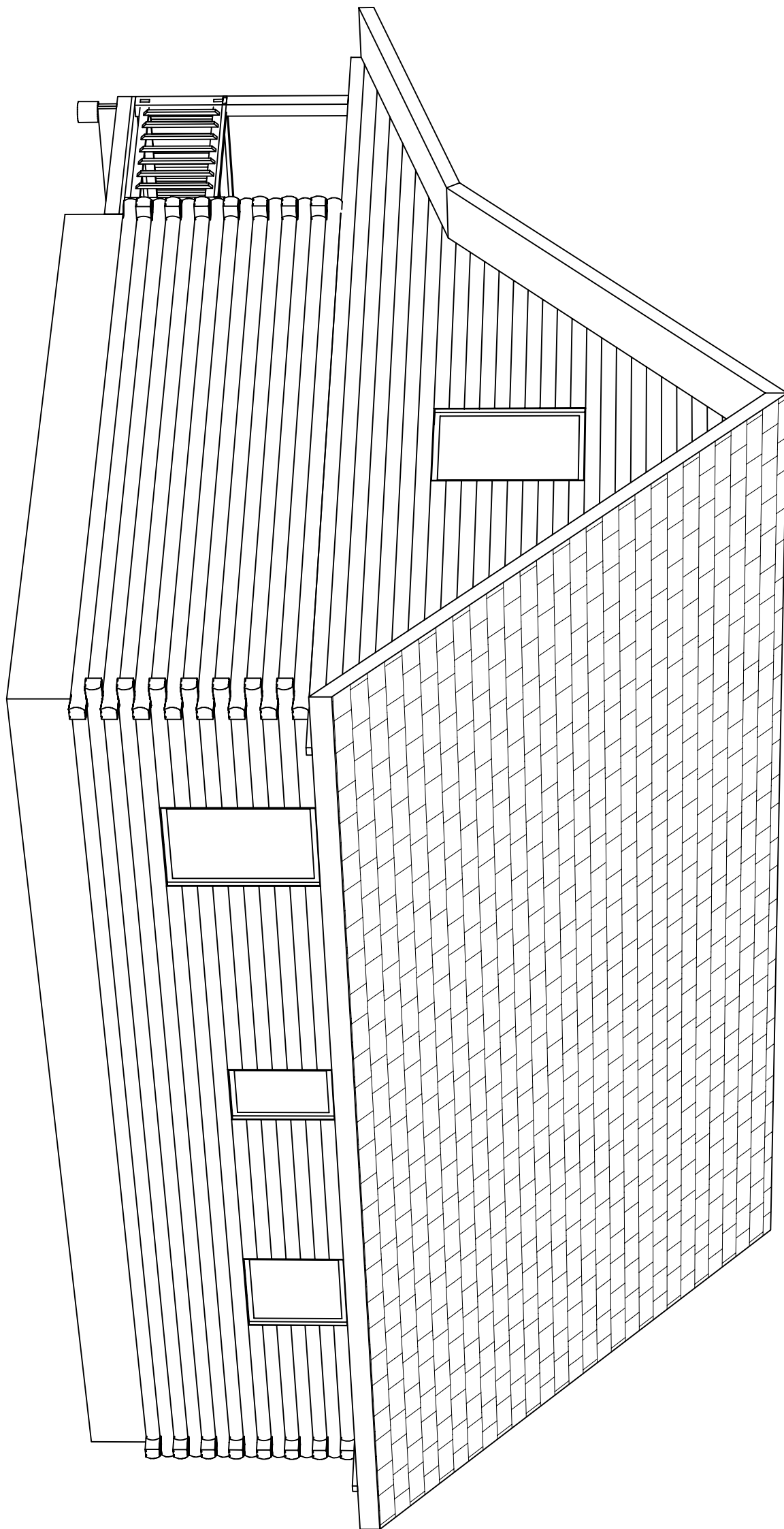


Riverbend Log Homes
 PH: 1-800-561-3000
 PH: 1-506-575-2255
 FAX: 1-506-575-2855
 www.riverbendloghomes.com

PROJECT NAME:
 22'x34' Lakeside (eng. Truss)
 BLDG. STYLE:
 22'x34' Lakeside With Eng. Roof Truss

SHEET TITLE:
 Elevations

SHEET NO:
 A1



PROJECT NO: #
 DATE: ----
 SHT SUBSET: 3D Reps & Elevs
 DRAWN BY: ----
 CHK'D BY: | REV. NO: 0
 SCALE: N.T.S.

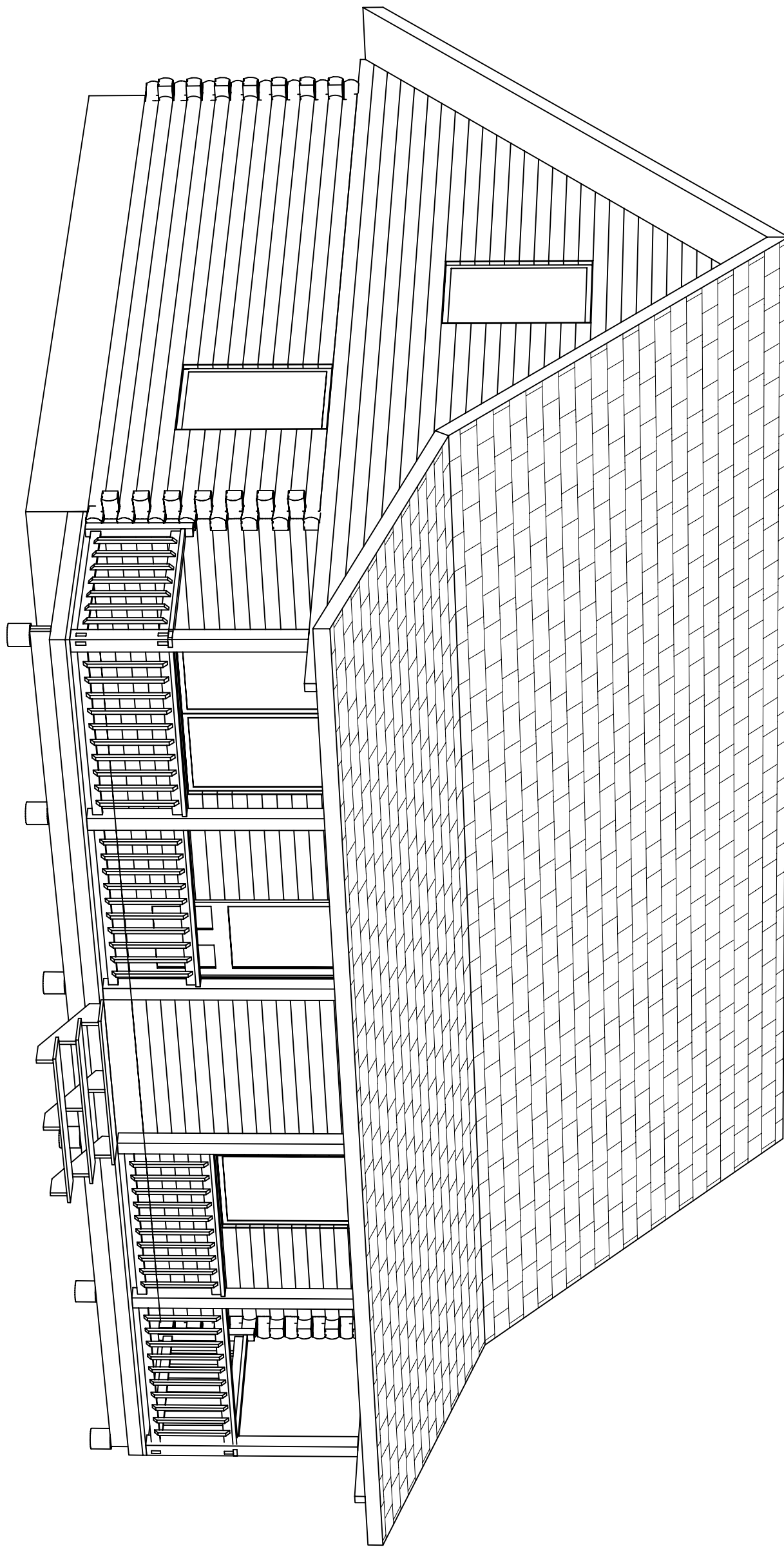


Riverbend Log Homes
 PH: 1-800-561-3000
 PH: 1-506-575-2255
 FAX: 1-506-575-2855
 www.riverbendloghomes.com

PROJECT NAME:
 22'x34' Lakeside (eng. Truss)
 BLDG. STYLE:
 22'x34' Lakeside With Eng. Roof Truss

SHEET TITLE:
 3D View

SHEET NO:
 A2



PROJECT NO: #
 DATE: ----
 SHT SUBSET: 3D Reps & Elevs
 DRAWN BY: ----
 CHK'D BY: REV. NO: 0
 SCALE: N.T.S.

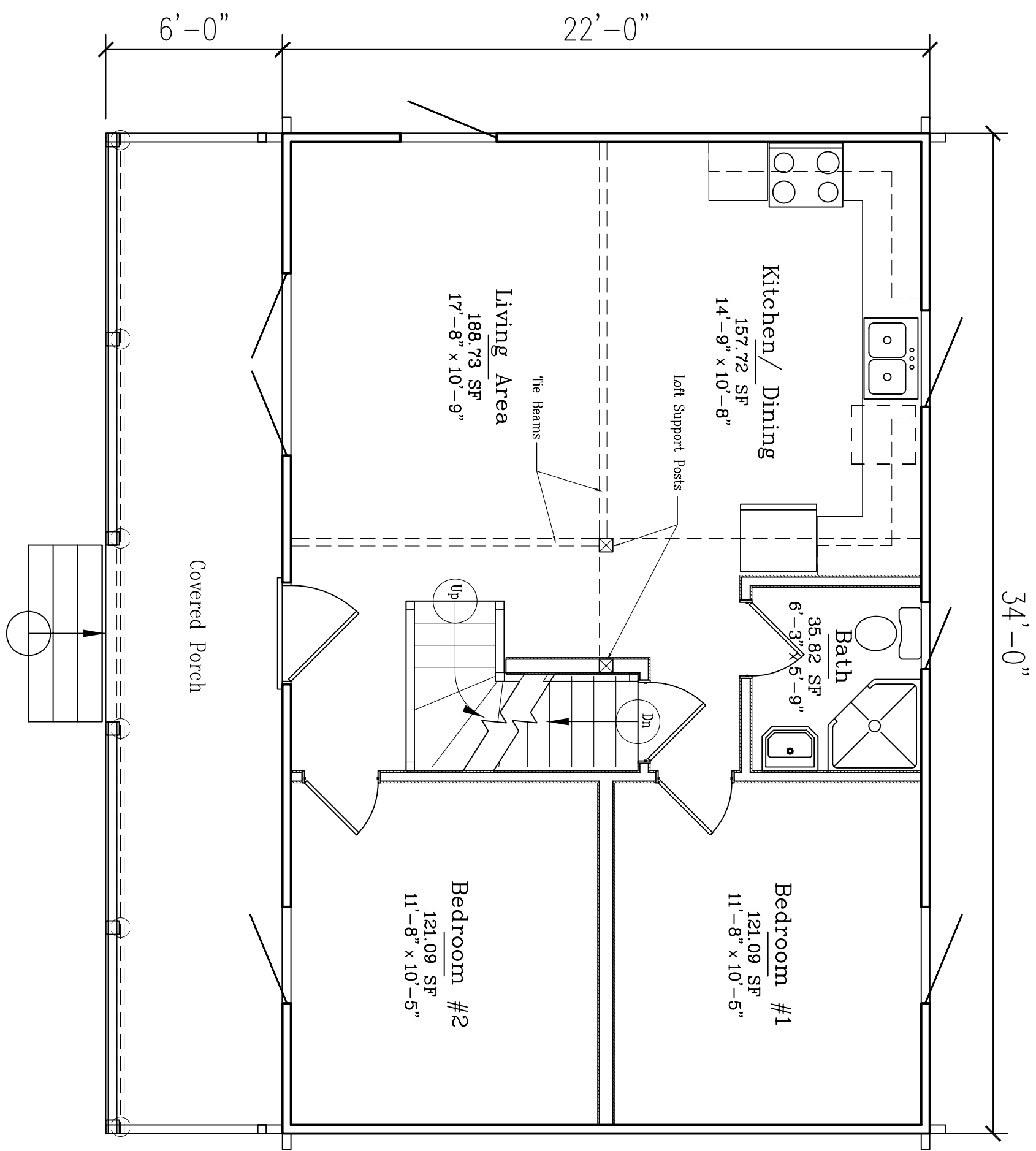


Riverbend Log Homes
 PH: 1-800-561-3000
 PH: 1-506-575-2255
 FAX: 1-506-575-2855
 www.riverbendloghomes.com

PROJECT NAME:
 22'x34' Lakeside (eng. Truss)
 BLDG. STYLE:
 22'x34' Lakeside With Eng. Roof Truss

SHEET TITLE:
 3D View

SHEET NO:
 A3



PROJECT NO: #
 DATE: ----
 SHT SUBSET: Plans
 DRAWN BY: ----
 CHK'D BY: REV. NO: 0
 SCALE: 1/4" = 1'-0"

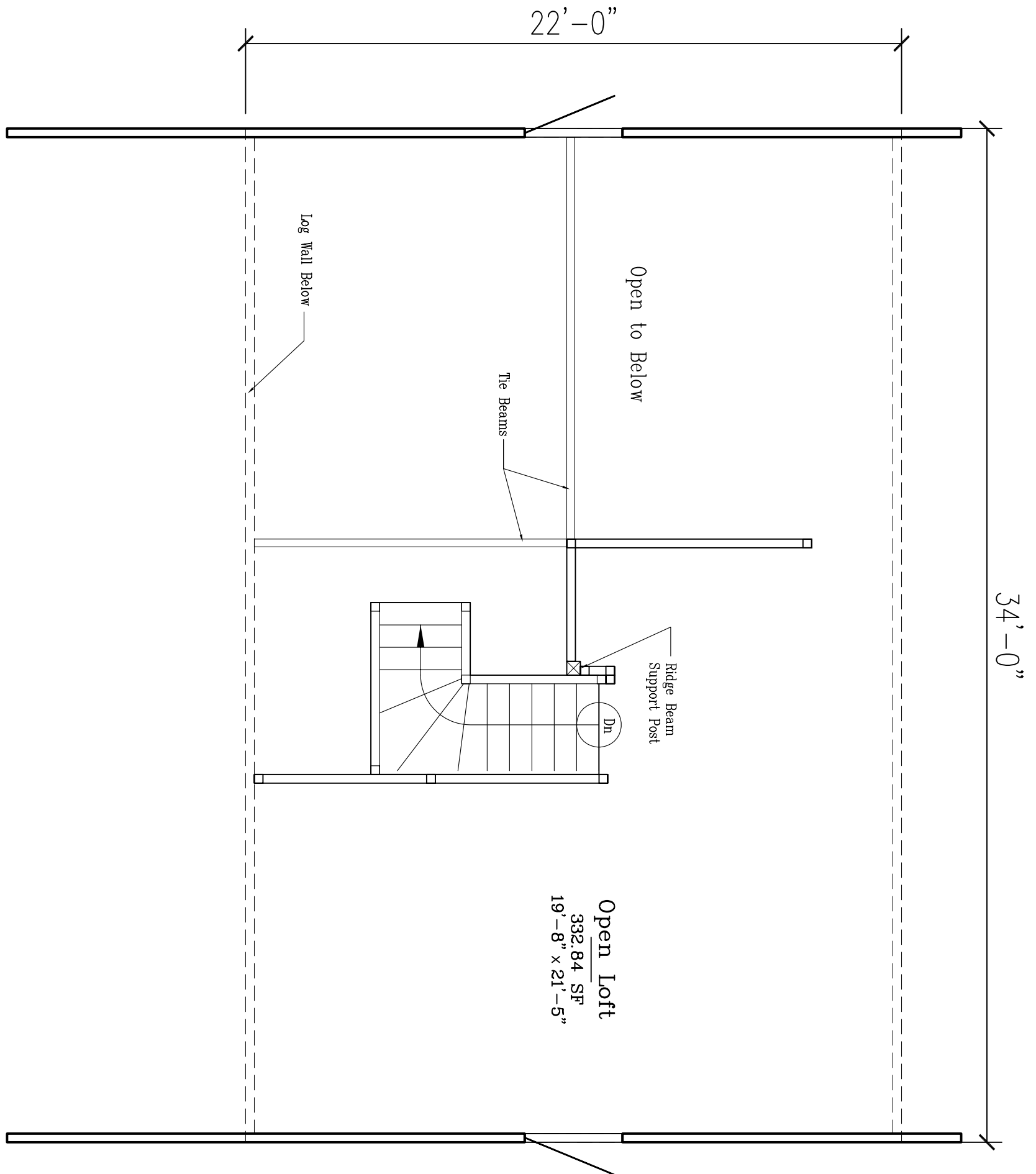


Riverbend Log Homes
 PH: 1-800-561-3000
 PH: 1-506-575-2255
 FAX: 1-506-575-2855
 www.riverbendloghomes.com

PROJECT NAME:
 22'x34' Lakeside (eng. Truss)
 BLDG. STYLE:
 22'x34' Lakeside With Eng. Roof Truss

SHEET TITLE:
 First Floor Plan

SHEET NO:
 B2



PROJECT NO: #
 DATE: ----
 SHT SUBSET: Plans
 DRAWN BY: ----
 CHK'D BY: REV. NO: 0
 SCALE: 1/4"=1'-0"



Riverbend Log Homes
 PH: 1-800-561-3000
 PH: 1-506-575-2255
 FAX: 1-506-575-2855
 www.riverbendloghomes.com

PROJECT NAME:
 22'x34' Lakeside (eng. Truss)
 BLDG. STYLE:
 22'x34' Lakeside With Eng. Roof Truss

SHEET TITLE:
 Loft Floor Plan

SHEET NO:
 B3